

SAFETY AND SECURITY

Table of Contents

Chapter 8: Safety and Security 246-272

Strategic Direction for Safety and Security.....246

Indicators.....248

 Crime Rates249

 Index Crimes.....250

 Non-violent Crimes252

 Violent Crimes254

 Jail Population256

 Juvenile Crime257

 Delinquency Referrals257

 Commitments to DJJ259

 Transfers to Adult Court260

 Safety for Children and Families261

 Unintentional Injuries.....261

 Violence in Homes and Community.....263

Community Response to Safety and Security268

STRATEGIC DIRECTION FOR SAFETY AND SECURITY

The safety and security chapter includes the following:

- Overview
- Crime Rates
- Juvenile Delinquency
- Safety for Children and Families

Analysis

Data from the indicators on safety and security suggest that, while law enforcement is effective in reducing violent crime in many areas of the county, there is a problem in Fort Pierce, Port St. Lucie, and in communities along the U.S. 1 corridor. In addition, St. Lucie County has a very high rate of domestic violence. The rate of crime in high schools is improving, but still needs attention. The areas which pose the greatest levels for concern are:

Crime Rates

- Crime index – In St. Lucie County, the crime index is below the state rate and far below one peer county, but higher than two peer counties. In addition, the crime index in Fort Pierce is 2.5 times the county as a whole and double the state rate.
- Non-violent crimes – The rate of non-violent crime is below the state rate and far below one peer county. However, it is higher than two peer counties.
- Jail population – The incarceration rate is almost three times the state rate and much higher than all three peer counties. However, this may be due to more aggressive law enforcement rather than more crimes being committed.

Juvenile Delinquency

- Delinquency referrals – The rate of delinquency referrals is slightly above the state rate and similar to two peer counties, but well below the third peer county. After a drop in 2004-2005, the rate has returned to its previous level. This may be due to a tougher stance on juveniles by prosecutors and law enforcement rather than an actual increase in juvenile offences.
- Commitments to Department of Juvenile Justice – In St. Lucie County, this rate is almost double the state rate and is higher than the rate of all three peer counties. Again, this may not indicate a higher level of juvenile offences.
- Transfers to adult court – The rate of transfers to adult court for juveniles is higher than all three peer counties.

Safety for Children and Families

- Domestic violence – The rate of domestic violence is dramatically higher than the state level and above all three peer counties.
- Crime and violence in high schools – In St. Lucie County, this rate is higher than the state rate and is higher than all three peer counties. However, it is trending down.

Consider the following strategic directions to address these concerns:

1. Evaluate, improve, or expand law enforcement presence on the U.S. 1 corridor and in Fort Pierce (zip codes 34950 and 34947).
2. Develop, evaluate, improve, and expand community watch programs, particularly in Fort Pierce, and St. Lucie County communities abutting the U.S. 1 corridor.
3. Develop, evaluate, improve, and expand shelters for women and their children who are victims of domestic violence to provide a safe environment for separating from an abusive spouse/partner.
4. Develop, evaluate, improve, and expand safety and security in middle schools and high schools to further reduce crime and violence levels.
5. Develop, evaluate, improve, or expand after school programs to keep children from becoming involved in gangs.

INDICATORS

Safety and security in a community are generally defined in terms of a low crime rate, particularly for the crimes defined as index crimes, i.e., murder, rape, robbery, aggravated assault, burglary, larceny, and motor vehicle theft. Rates of juvenile crime also contribute to the perception of safety and security in a community. Accidental deaths reflect safety and security as well. For children, the safety and security of their environment significantly impacts their growth and development. Violence experienced by children may include domestic violence and child abuse or threatened harm, as well as crime and violence in school. Parental neglect also undermines a child's security and healthy development. Indicators of safety and security for the general public, for children and families, and related to juvenile delinquency include the following:

- Crime rates
 - Index crime rate
 - Non-violent crime rates
 - Non-violent crimes (burglary, larceny, motor vehicle theft)
 - Violent crime rates
 - Violent crimes (aggravated assault, forcible sexual offenses, robbery, and murder)
 - Jail population
- Juvenile Delinquency
 - Youth referred for delinquency offenses
 - Youth committed for delinquency offenses
 - Youth referred to adult court for delinquency offenses
- Safety for Children and Families
 - Domestic violence
 - Deaths from unintentional injuries
 - Child abuse, neglect or threatened harm
 - Crime and violence in high schools

Crime Rates

St. Lucie County saw a 7.2 percent decrease in the rate of index crimes (murder, rape, robbery, aggravated assault, burglary, larceny, and motor vehicle theft) from 2004 to 2005, while the population increased 6.1 percent. Total arrests during the time period increased by 15 percent, while rates for each category of offense dropped.

Crime in St. Lucie County, 2005

Summary of UCR Data			
St. Lucie County	2004	2005	% Change
Population	226,216	240,039	6.1
Total Arrests	13,595	15,643	15.1
Total Index Offenses	9,129	8,985	-1.6
Violent Rate	587.5	582.4	-0.9
Non-Violent Rate	3,448.0	3,160.7	-8.3
Index Rate	4,035.5	3,743.1	-7.2

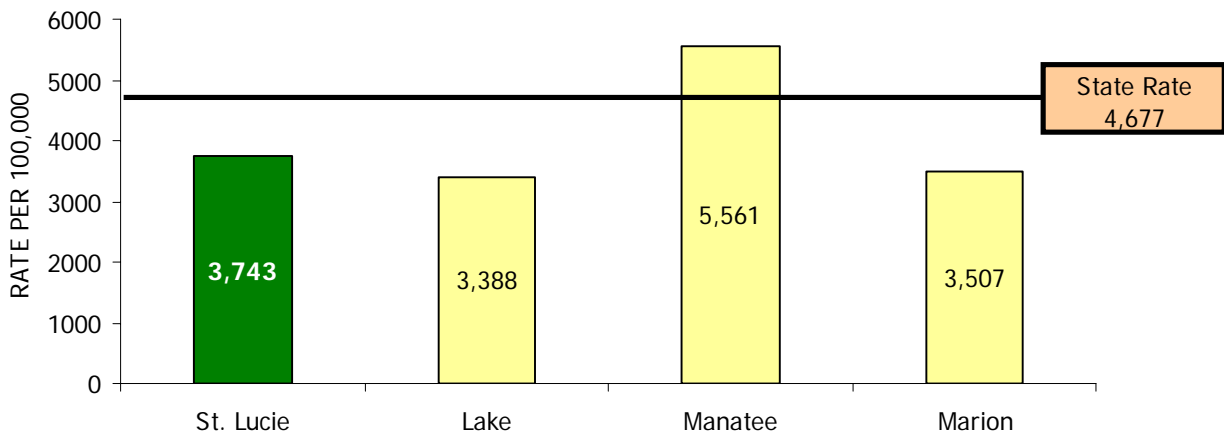
Source: Florida Department of Law Enforcement

St. Lucie County has lower rates than the state as a whole for index crimes, non-violent crimes, and violent crimes. Compared to peer counties, rates in St. Lucie County are fairly close to rates in two of the peer counties and considerably lower than the third.

Index Crimes

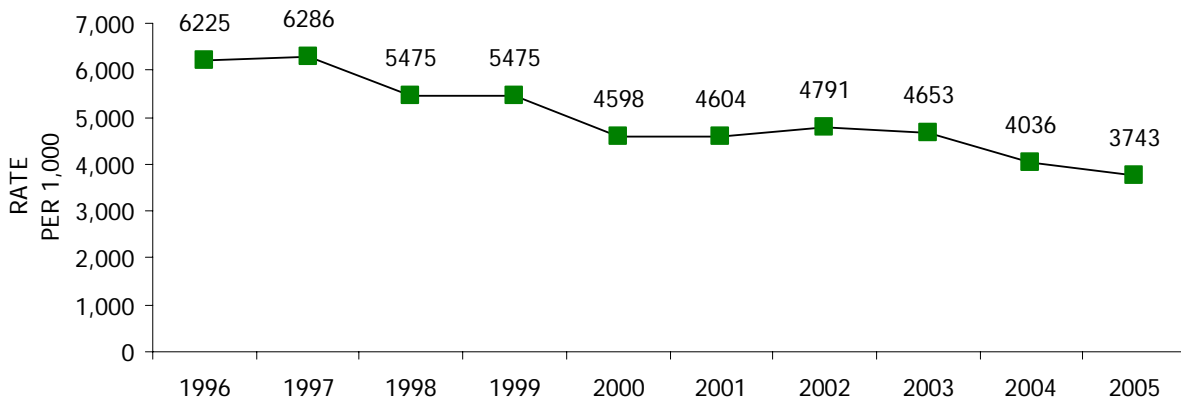
Index crime rates provide a summary measure of crime in a community. Index crimes are Part 1 crimes under the Uniform Crime Reporting System, including murder, sex offenses, robbery, aggravated assault, burglary, larceny, and motor vehicle theft as reported to law enforcement. St. Lucie County's rate of index crimes is slightly higher than two peer counties, but is far lower than one peer county and lower than the state rate. The county has an index crime rate for 2005 of 3,743 per 100,000 population compared to a state rate of 4,677. The index crime rate trended downward between 2002 and 2005.

Index Crime Rates, 2005



Source: Florida Department of Law Enforcement, Uniform Crime Report Data

Trend in Index Crime Rate
St. Lucie, 1996 - 2005



Source: Florida Department of Law Enforcement, Uniform Crime Report Data

Index crime rates within individual communities in St. Lucie County are below the state rate, with the exception of Fort Pierce which has a rate 2.5 times the county as a whole and twice the state rate. The Port St. Lucie Police Department reports the lowest crime rate for index crimes. The first table below shows the crime rate for index crimes for each of St. Lucie County's major communities. The second table shows the number of each index crime in each community as reported in 2005.

Index Crime Rate by St. Lucie County Jurisdiction, 2005

Florida	4,677.2
St. Lucie County	3,743.1
St. Lucie County Sheriffs Office	3,268.1
Fort Pierce Police Department	9,367.6
Port St. Lucie Police Department	2,310.8
St. Lucie-DEP Div of Law Enforce	0
St. Lucie-Florida Game Commission	0
FHP - Fort Pierce	0

Per 100,000

Source: Florida Department of Law Enforcement

Total Index Crime for St. Lucie County, Jurisdiction and Offense, 2005

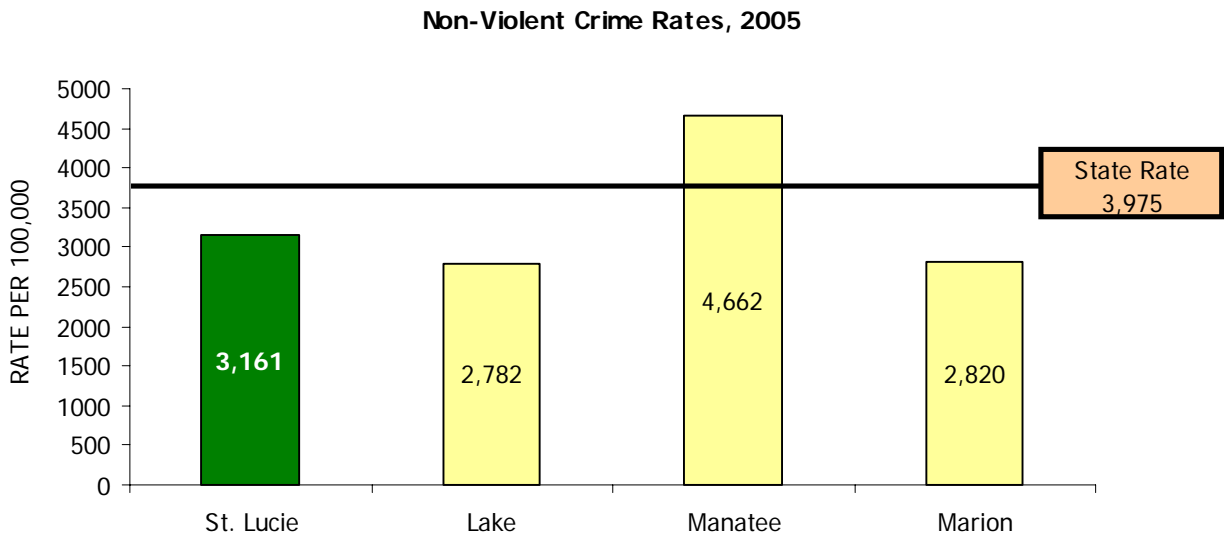
Jurisdiction	Population	Total Index Crime	Murder	Rape	Robbery	Aggravated Assault	Burglary	Larceny	Motor Vehicle Theft	Crime Rate/100,000	% Cleared
St. Lucie County	240,039	8,985	11	81	256	1,050	2,186	4,628	773	3,743.1	27.4
St. Lucie County Sheriffs Office	72,335	2,364	0	28	34	304	544	1,203	251	3,268.1	33.2
Fort Pierce Police Department	38,569	3,613	10	36	195	495	872	1,629	376	9,367.6	24.1
Port St. Lucie Police Department	129,135	2,984	1	17	27	242	770	1,783	144	2,310.8	26.6
St. Lucie-DEP Div of Law Enforce	0	5	0	0	0	0	0	5	0	0	100.0
St. Lucie-Florida Game Comm	0	0	0	0	0	0	0	0	0	0	0.0
FHP - Fort Pierce	0	19	0	0	0	9	0	8	2	0	15.8

Source: Florida Department of Law Enforcement

Non-violent Crimes

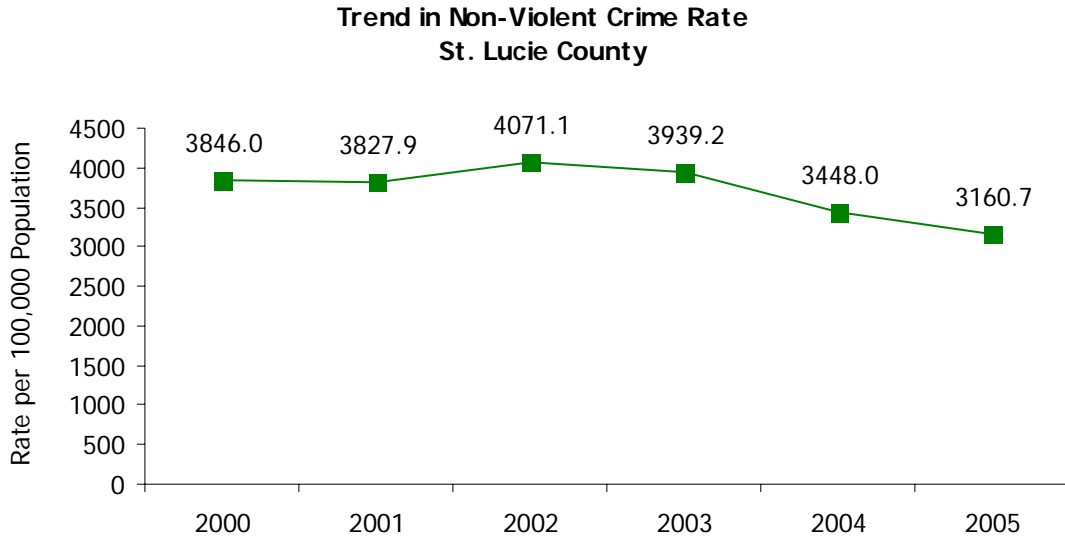
St. Lucie County has a non-violent crime rate of 3,161 per 100,000 population. For non-violent crimes, including burglary, larceny, and motor vehicle theft offenses, St. Lucie County again is below the state rate of 3,975 and substantially below one peer county (Manatee), but slightly higher than two of the peer counties.

- The highest rate is for **larceny**, with 1,928 per 100,000 population compared to a state rate of 2,636 for 2005. The rate for St. Lucie County is slightly higher than two of the peer counties, but substantially less than the third peer county (Manatee).
- The rate for **burglary** in St. Lucie County is 911 per 100,000 population, lower than the state rate of 920. The rate in St. Lucie County is slightly higher than two of the three peer counties, but lower than the third (Manatee).
- For **motor vehicle thefts**, the rate in St. Lucie County is 322 compared to the state rate of 420. The St. Lucie County rate is notably higher than two peer counties, but lower than the third (Manatee).



Source: Florida Department of Law Enforcement, Uniform Crime Report Data

The rates of non-violent crime have dropped steadily since 2002.



Source: Florida Department of Law Enforcement, Uniform Crime Report Data

Non-Violent Crimes By Jurisdiction

Jurisdiction	Population	Burglary	Larceny	Motor Vehicle Theft	Total	Rate per 100,000
St. Lucie County	240,039	2,186	4,628	773	7,587	3160.7
St. Lucie County Sheriffs Office	72,335	544	1,203	251	1,998	2762.1
Fort Pierce Police Department	38,569	872	1,629	376	2,877	7459.4
Port St. Lucie Police Department	129,135	770	1,783	144	2,697	2088.5
St. Lucie-DEP Div of Law Enforce	0	0	5	0	5	NA
St. Lucie-Florida Game Comm	0	0	0	0	0	NA
FHP - Fort Pierce	0	0	8	2	10	NA

Source: FDLE, rate calculated by PEI (number of incidents divided by the population)

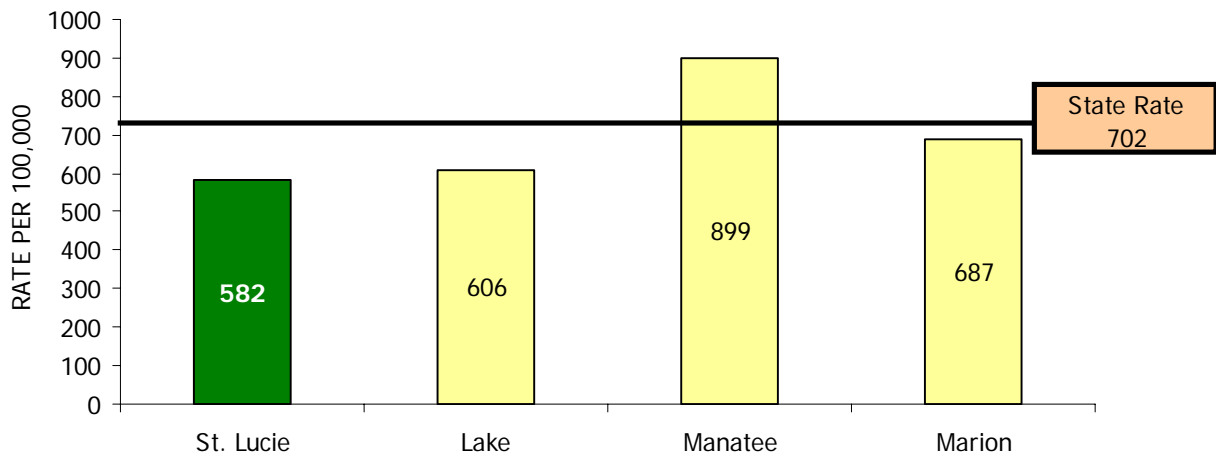
Violent Crimes

Violent crimes include murder, sexual offenses, robbery, and aggravated assault offenses. With a violent crime rate of 582, St. Lucie County is considerably below the statewide rate of 702 and below the rates in each of the three peer counties. In comparison to peer counties, St. Lucie rates are well below one peer and slightly below the other two peer counties.

For specific violent crimes, St. Lucie County's rate is lower than the state rate in three of the categories but higher than the state rate in sex offenses. In comparison to peer counties, St. Lucie County compares least favorably in robbery rates.

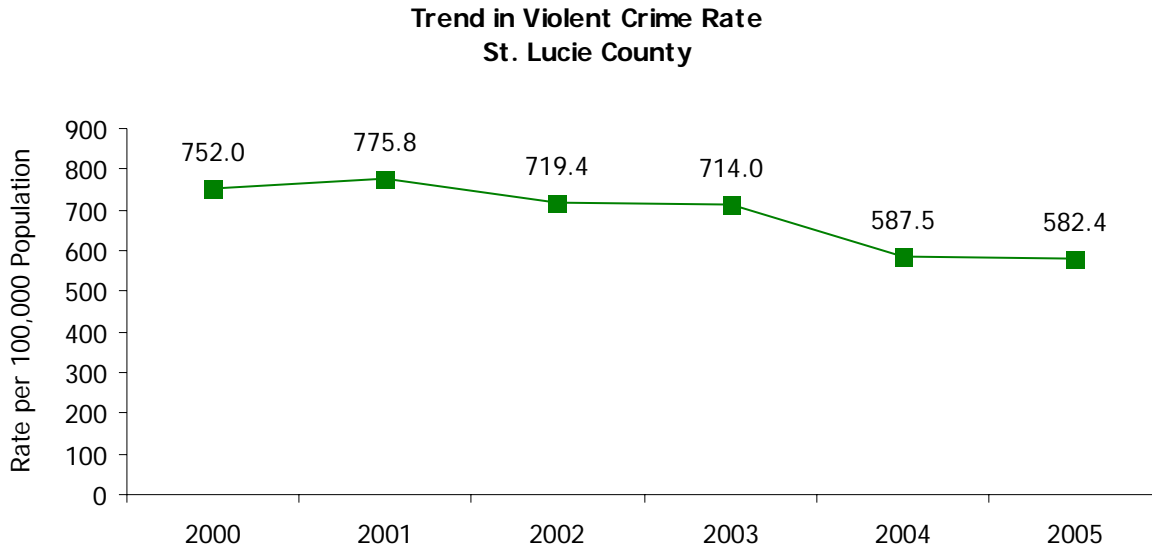
- The highest rate is for **aggravated assault**, with 398 per 100,000 population compared to a state rate of 461. The St. Lucie County rate is lower than each of the three peer counties.
- The rate for **forcible sex offenses** in St. Lucie County is 73 per 100,000 population, higher than the state rate of 68. The rate in St. Lucie County is lower than two peer counties, but higher than the third peer county.
- For **murder**, the rate in St. Lucie County is 4.6 compared to the state rate of 4.9. The St. Lucie County murder rate is slightly lower than two peer counties, but slightly higher than the third peer county.
- For **robbery**, the rate in St. Lucie County is 106 compared to the state rate of 168. The St. Lucie County rate is lower than one peer county, but is higher than two peer counties.

Violent Crime Rates, 2005



Source: Florida Department of Law Enforcement, Uniform Crime Report Data

The rates of violent crime for 2004 and 2005 dropped sharply from the rate for 2003.



Source: Florida Department of Law Enforcement, Uniform Crime Report Data

Violent Crimes By Jurisdiction

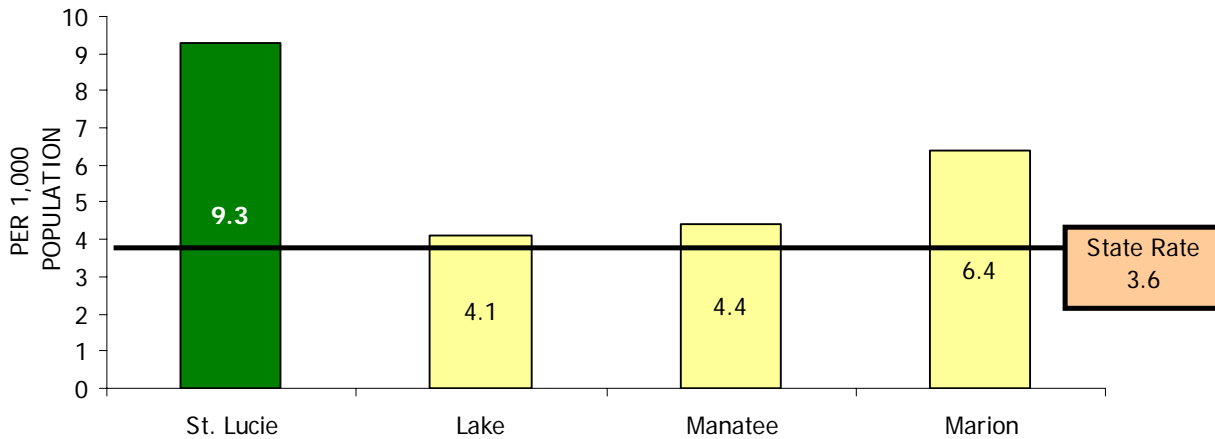
Jurisdiction	Population	Murder	Rape	Robbery	Aggravated Assault	Total	Rate per 100,000
St. Lucie County	240,039	11	81	256	1,050	1,398	582.4
St. Lucie County Sheriffs Office	72,335	0	28	34	304	366	506.0
Fort Pierce Police Department	38,569	10	36	195	495	736	1908.3
Port St. Lucie Police Department	129,135	1	17	27	242	287	222.2
St. Lucie-DEP Div of Law Enforce	0	0	0	0	0	0	NA
St. Lucie-Florida Game Comm	0	0	0	0	0	0	NA
FHP - Fort Pierce	0	0	0	0	9	9	NA

Source: FDLE, rate calculated by PEI (number of incidents divided by the population)

Jail Population

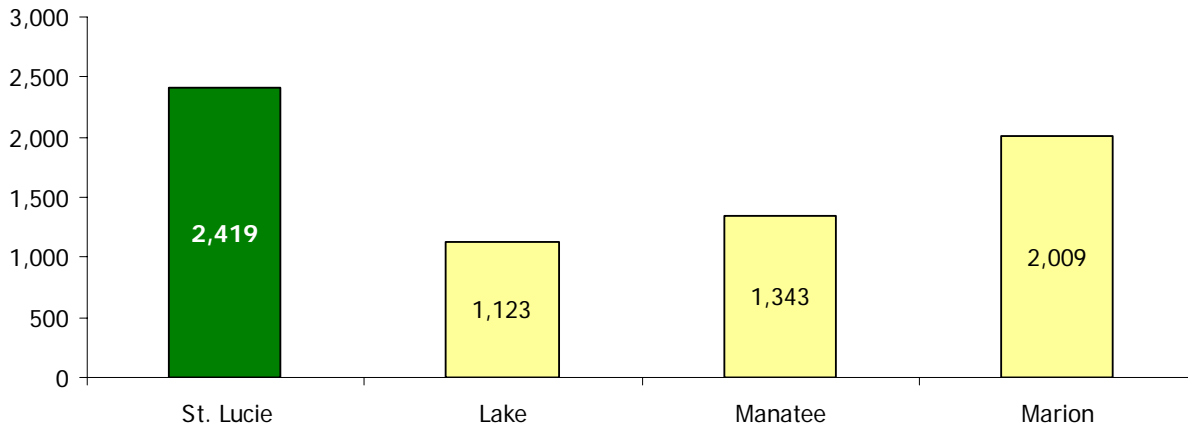
Using the most recent data, St. Lucie County has a much higher incarceration rate (per 1,000 population) than peer counties and the state. The county also has a higher average daily jail population than peer counties and the state. The daily jail population in St. Lucie County averages 2,419 and the most recent incarceration rate was 9.3, compared to the state rate of 3.6. Trend data for jail population was not available for St. Lucie County.

Jail Incarceration Rate, January 2007



Source: Florida Department of Corrections

Average Daily Jail Population, January 2007



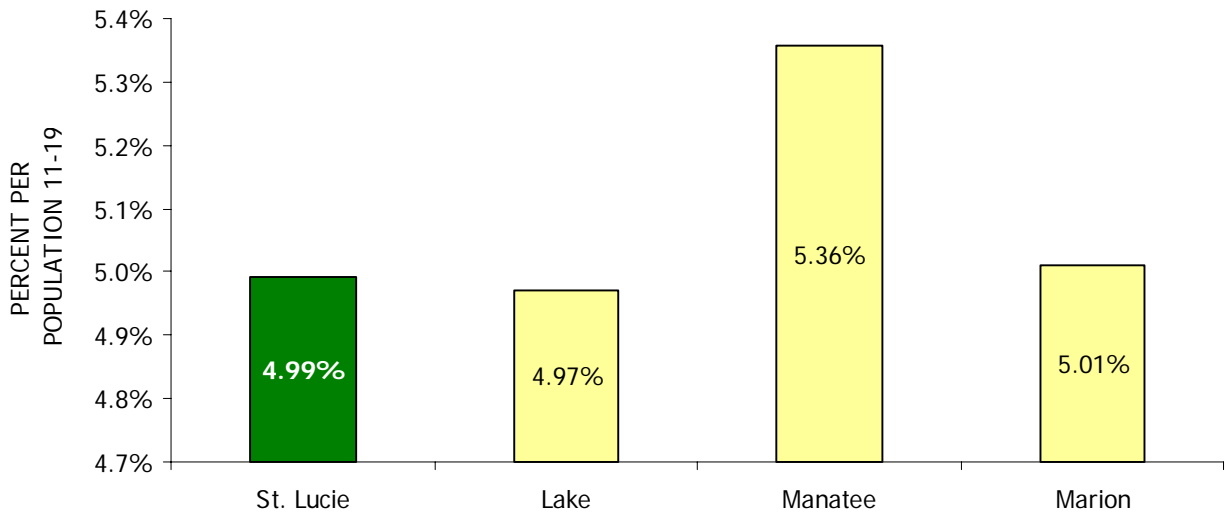
Source: Florida Department of Corrections

Juvenile Crime

Delinquency Referrals

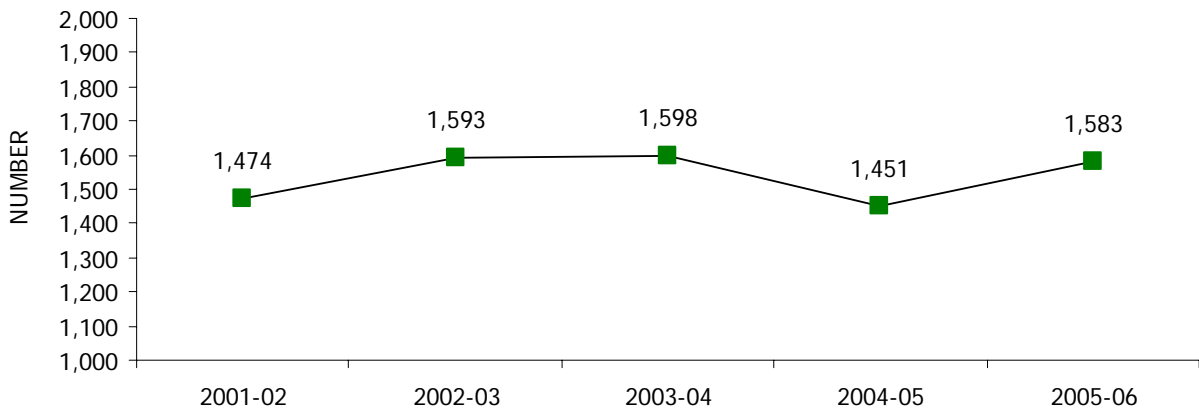
The delinquency rate based on referrals for delinquency in St. Lucie County was 4.99 per 100 age 11-19 population, slightly above the state rate of 4.02. This rate was similar to that in two of three peer counties, but considerably below the rate in the third peer county. After a nine percent decrease in 2004-2005, the number of referrals increased by nine percent in 2005-2006.

Rate of Youth Referred for Delinquency Offenses, 2005-06



Source: Florida Department of Juvenile Justice. Rate calculated by PEI (number of commitments divided by the population)

Trend in Number of Youth Referred for Delinquency Offenses, St. Lucie County 2001-2006



Source: Florida Department of Juvenile Justice

SAFETY AND SECURITY

Data on the number of charges, referrals to DJJ, and the number of youth involved are available by zip code for 2005-2006. The table below shows the number of charges, the number of referrals to DJJ, and the number of youth involved for each of the major zip code areas of St. Lucie County. Note that, in some zip code areas, data are not available for some months. The areas with the highest counts are the 34950 area of Ft. Pierce, and two of the zip code areas that include Port St. Lucie, Fort Pierce, and St. Lucie West (34953 and 34983).

Zip Code	Community	Data Available for:	CHARGES				REFERRALS				YOUTHS			
			Total	Felony	Misdem.	Other*	Total	Felony	Misdem.	Other*	Total	Felony	Misdem.	Other*
34945	Fort Pierce	August 2005-May 2006	25	12	12	1	17	7	9	1	13	4	8	1
34946	Fort Pierce	July 2005-June 2006	215	74	98	43	142	52	58	32	82	38	38	6
34947	Fort Pierce	July 2005-June 2006	473	157	248	68	301	114	139	48	174	79	80	15
34949	Fort Pierce, Hutchinson Island	Aug-Dec 05, Feb-Mar, May-Jun 06	0	0	0	0	0	0	0	0	0	0	0	0
34950	Fort Pierce	July 2005-June 2006	1,013	333	520	160	620	235	285	100	329	155	150	24
34951	Fort Pierce	July 2005-June 2006	186	62	85	39	107	35	50	22	68	27	35	6
34952	Port St. Lucie, Fort Pierce	July 2005-June 2006	340	114	169	57	205	58	104	43	124	47	65	12
34953	Port St. Lucie, Fort Pierce, St. Lucie West	July 2005-June 2006	692	180	369	143	439	119	233	87	279	98	145	36
34981	Fort Pierce	Jul-Aug 05, Oct 05-Jun 06	61	28	23	10	35	16	13	6	18	11	5	2
34982	Fort Pierce	July 2005-June 2006	339	100	190	49	220	65	120	35	150	51	86	13
34983	Port St. Lucie, Fort Pierce, St. Lucie West	July 2005-June 2006	556	166	296	94	344	102	169	73	219	75	124	20
34984	Port St. Lucie, Fort Pierce	July 2005-June 2006	143	46	88	9	89	21	59	9	65	19	44	2
34986	Port St. Lucie, Fort Pierce, St. Lucie West	Jul-Nov 05, Jan-Jun 06	90	39	44	7	52	17	30	5	38	15	21	2
34987	Port St. Lucie, Fort Pierce, St. Lucie West	Jul 05-Jan 06, Mar 06, Jun 06	24	6	9	9	16	5	6	5	13	4	5	4
Total			4,157	1,317	2,151	689	2,587	846	1,275	466	1,572	623	806	143

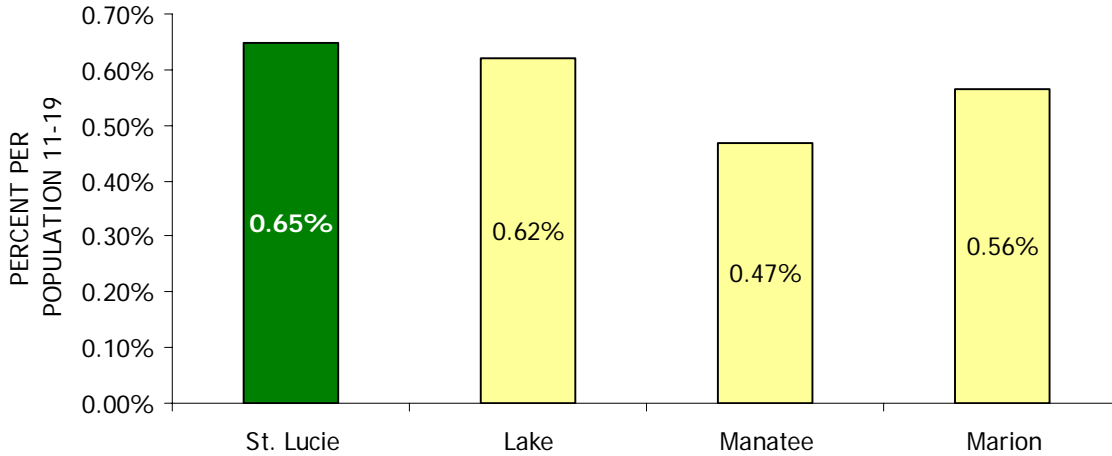
**"Other" includes:

- Contempt
- Violation Of Ordinance
- Non-Felony Traffic Offenses
- Interstate Compact
- Nonlaw Violation Of Probation
- Nonlaw Violation Of Aftercare
- Case Reopened
- Prosecution Previously Deferred
- Transfer From Other County

Commitments to DJJ

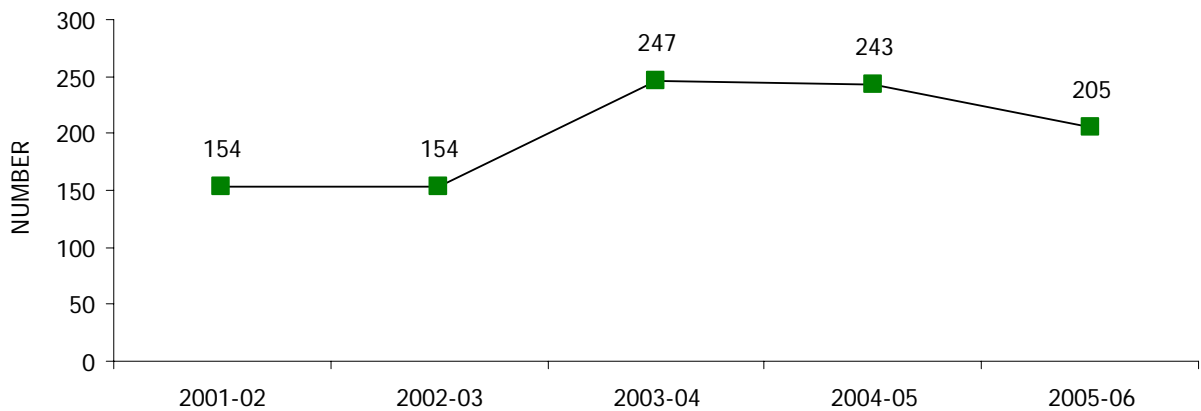
Youth in St. Lucie County were committed to the Department of Juvenile Justice at a rate of 0.65 per 100 age 11-19 population, compared to the state rate of 0.35. This exceeded the rate in each of the peer counties. After a 60 percent increase in 2003-2004, the number decreased by two percent in 2004-2005 and by 16 percent in 2005-2006.

Youth Committed for Delinquency Offenses FY 2005-06



Source: Florida Department of Juvenile Justice. Rate calculated by PEI (number of commitments divided by the population)

**Trend in Youth Committed for Delinquency Offenses
St. Lucie County 2001-2006**

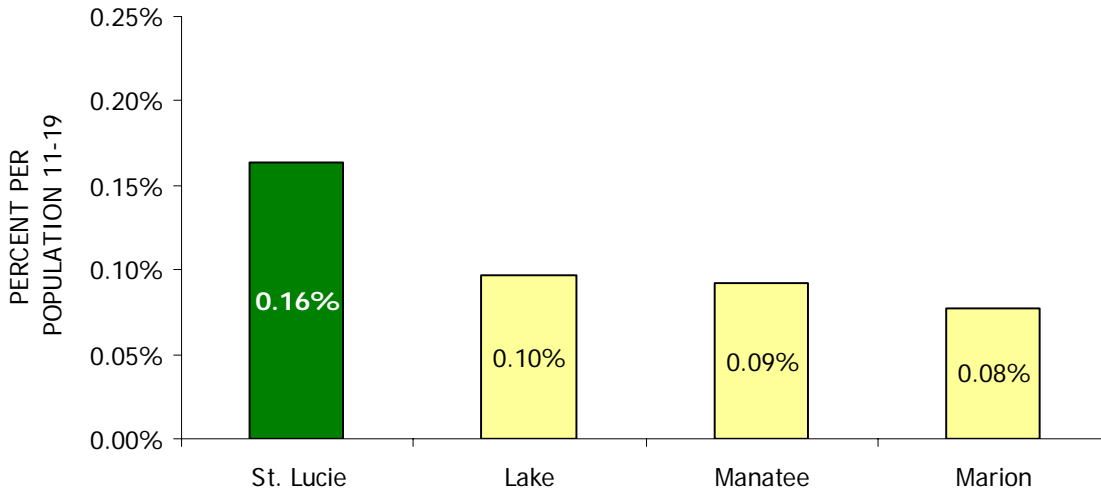


Source: Florida Department of Juvenile Justice

Transfers to Adult Court

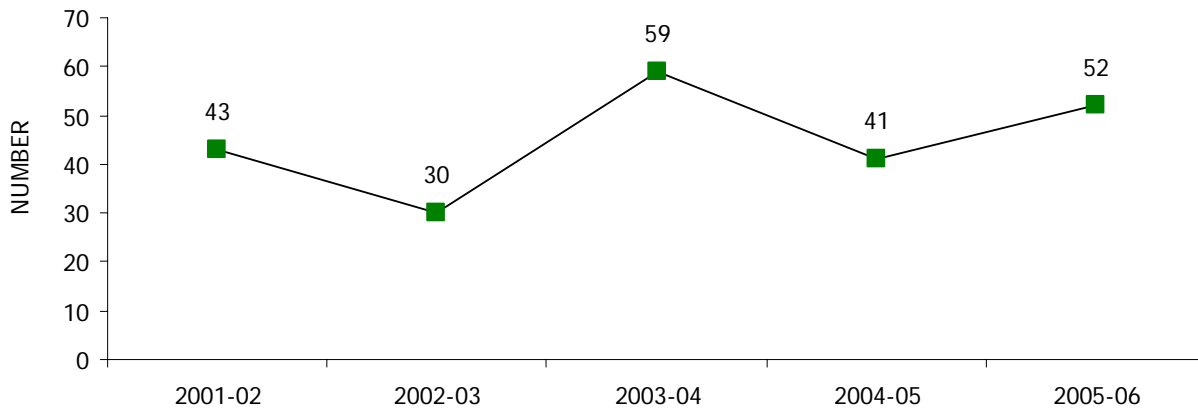
In terms of transfers to adult court, the rate in St. Lucie County was 0.16 per 100 age 11-19 population. Again, this exceeded the rate in each of the peer counties. The number of youth transferred to adult court has varied, with a 97 percent increase in 2003-2004, a 31 percent decrease in 2004-2005, and a 27 percent increase in 2005-2006.

Youth Transferred to Adult Court for Delinquency Offenses, FY 2005-06



Source: Florida Department of Juvenile Justice. Rate calculated by PEI (number of commitments divided by the population)

Trend in Youth Transferred to Adult Court for Delinquency Offenses, St. Lucie County, 2001-2006



Source: Florida Department of Juvenile Justice

Safety for Children and Families

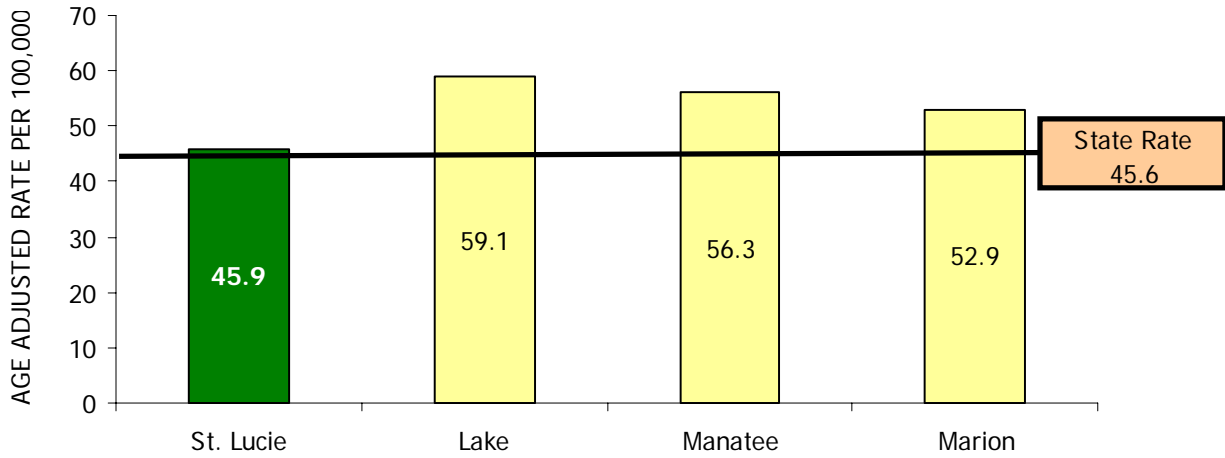
Unintentional Injuries

St. Lucie County has a lower death rate for unintentional injuries than each of the three peer counties and is at the state rate. Deaths from unintentional injuries occurred in St. Lucie County at rate of 45.9 per 100,000 population (age-adjusted), compared to a state rate of 45.6. In 2005, there were 117 deaths due to unintentional injuries in St. Lucie County. Of the 117 deaths, 43 percent were due to motor vehicle accidents. The causes of deaths from unintentional injuries in 2005 included:

- 43% from motor vehicle accidents (50)
- 22% from poisoning (26)
- 16% from falls (19)
- 5% drowning (6)

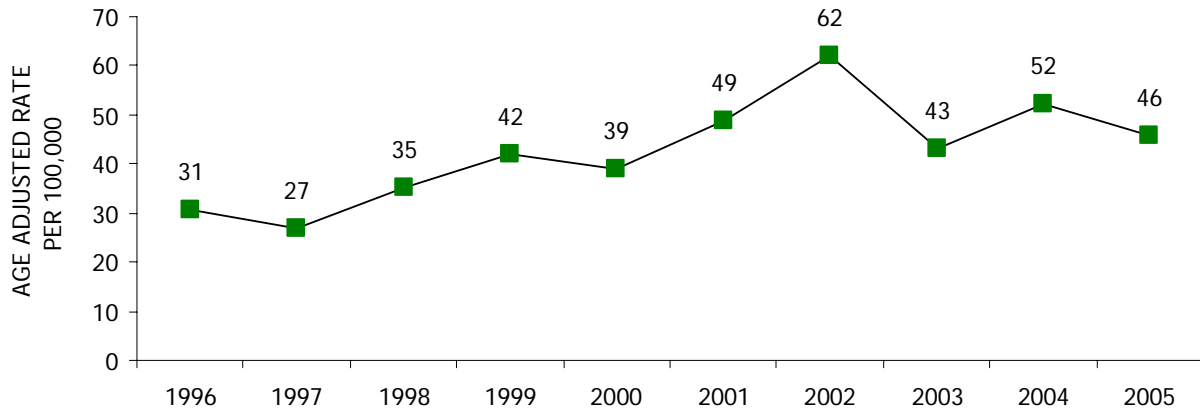
Except for a marked increase in 2002, the rate has ranged between 43 and 52 over the past five years, tracking the state rates.

Deaths from Unintentional Injuries, 2005



Source: Florida Department of Health, Office of Vital Statistics

**Trend in Deaths from Unintentional Injuries
St. Lucie, 1996 - 2005**



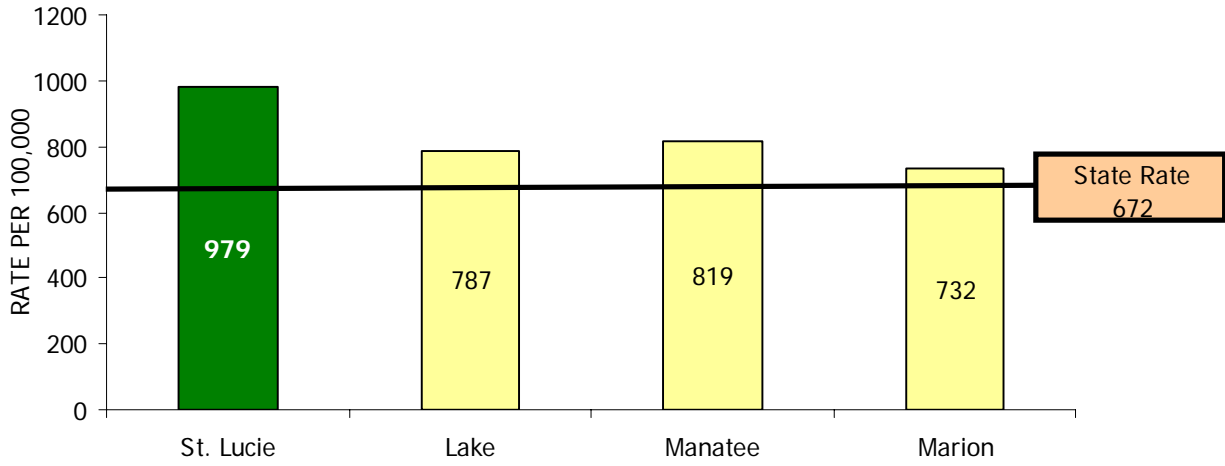
Source: Florida Department of Health, Office of Vital Statistics

Violence in Homes and Community

Indicators of safety and security related specifically to children and families include domestic violence, child abuse, neglect or threatened harm, and crime and violence in high schools. St. Lucie County compares favorably to the state and peer counties in terms of child abuse rates and is making progress in lowering rates of crime and violence in high schools. However, domestic violence is a concern given that the rate of incidents in St. Lucie County far exceeds the state rate and rates in peer counties.

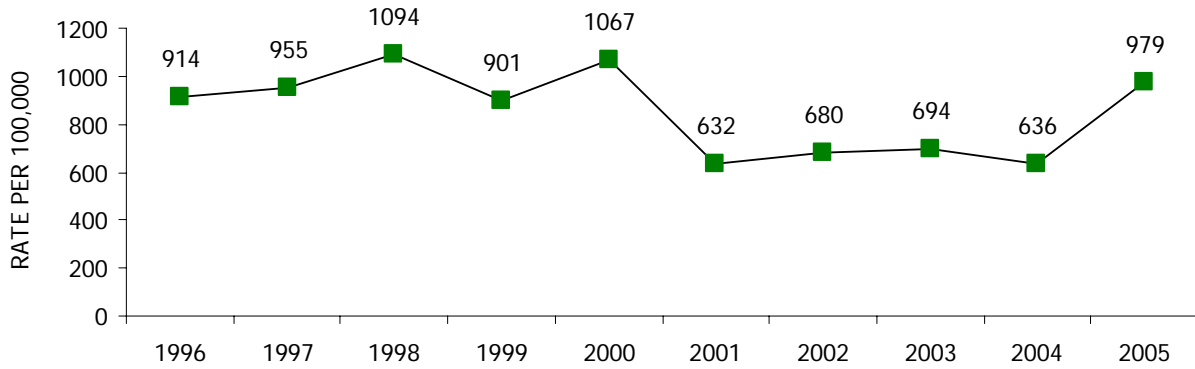
- In terms of **domestic violence**, the rate in St. Lucie County was 979 per 100,000 population in 2005, compared to 672 statewide. The rate was higher than all three peer counties. The trend had dropped and remained fairly level between 2001 and 2004, then jumped up again in 2005.
- In terms of **child abuse and neglect or threatened harm**, the rate in St. Lucie was 29.4 per 1,000 population, compared to 29.3 statewide. This rate was lower than the two peer districts (District 13 and Suncoast Region). The rate in St. Lucie County has dropped slightly relative to the previous fiscal year, while the state rate increased slightly.
- Considering **crime and violence in high schools**, the rate in St. Lucie County was 5.8 per 100 high school population. This was higher than the state rate of 5.0 and was higher than each of the three peer counties. The rate, however, has trended down over the past three years. The rate in middle schools was 15.6 per 100 middle school population. This was higher than the state rate of 14 and was higher than each of the three peer counties. The rate has trended down, as in high school, and dropped sharply in 2005-2006.

Domestic Violence Rates, 2005



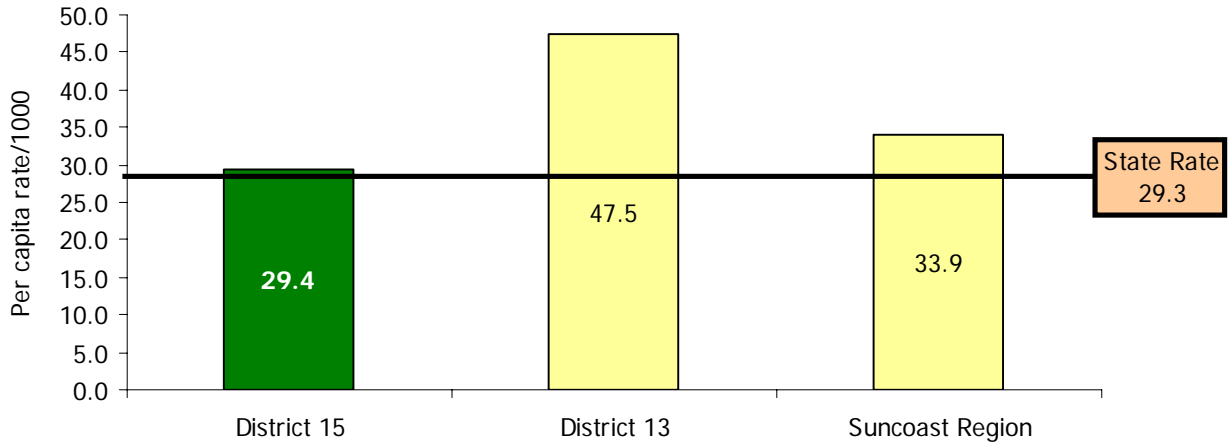
Source: Florida Department of Law Enforcement

**Trend in Domestic Violence Rates
St. Lucie County 1996-2005**



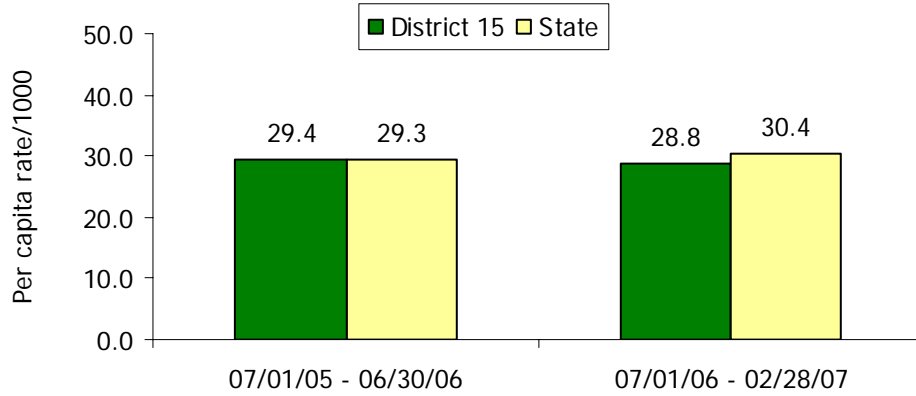
Source: Florida Department of Law Enforcement

Child Abuse Rate 06-07 (to date)



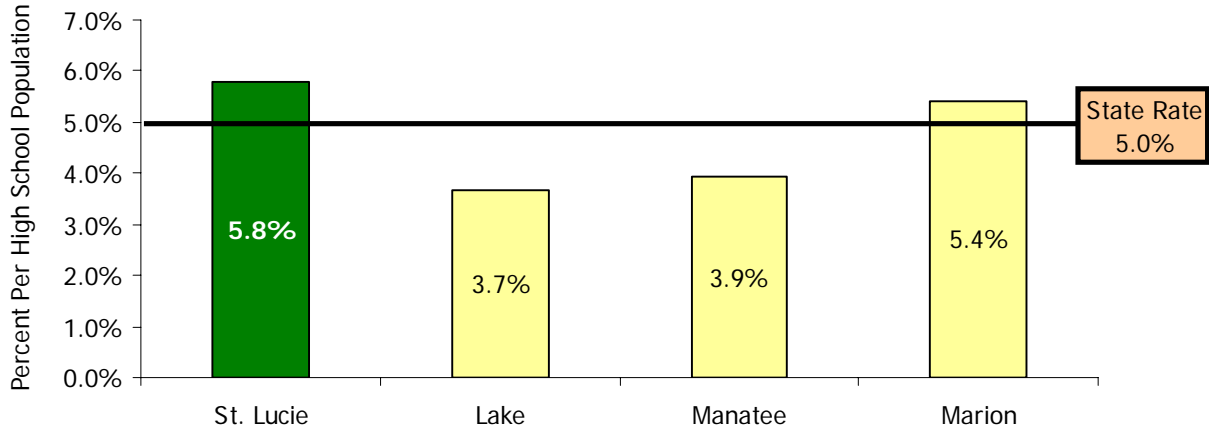
Source: Florida Department of Children and Families

**Child Abuse Rates
05-06 and 06-07 (to date)**



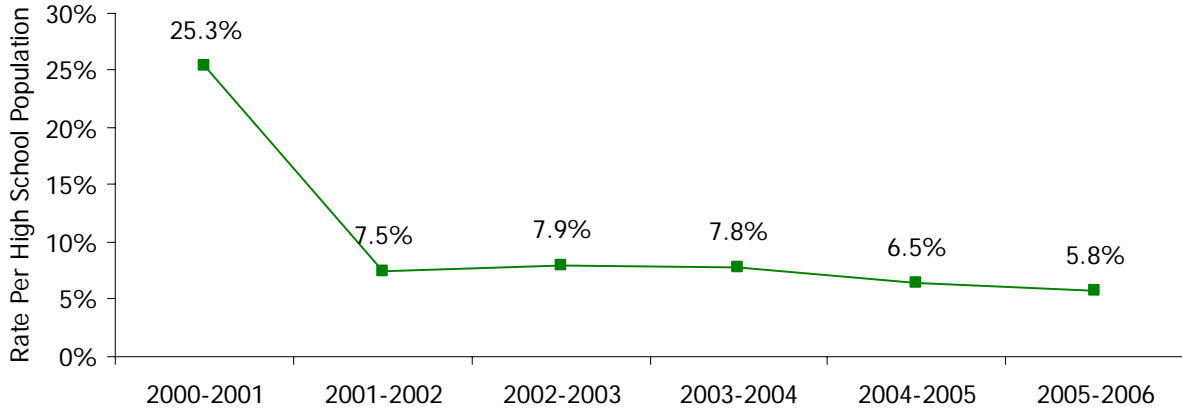
Source: Florida Department of Children and Families
Note: No comparable prior data available

Crime and Violence Incidents In High School, 2005-06



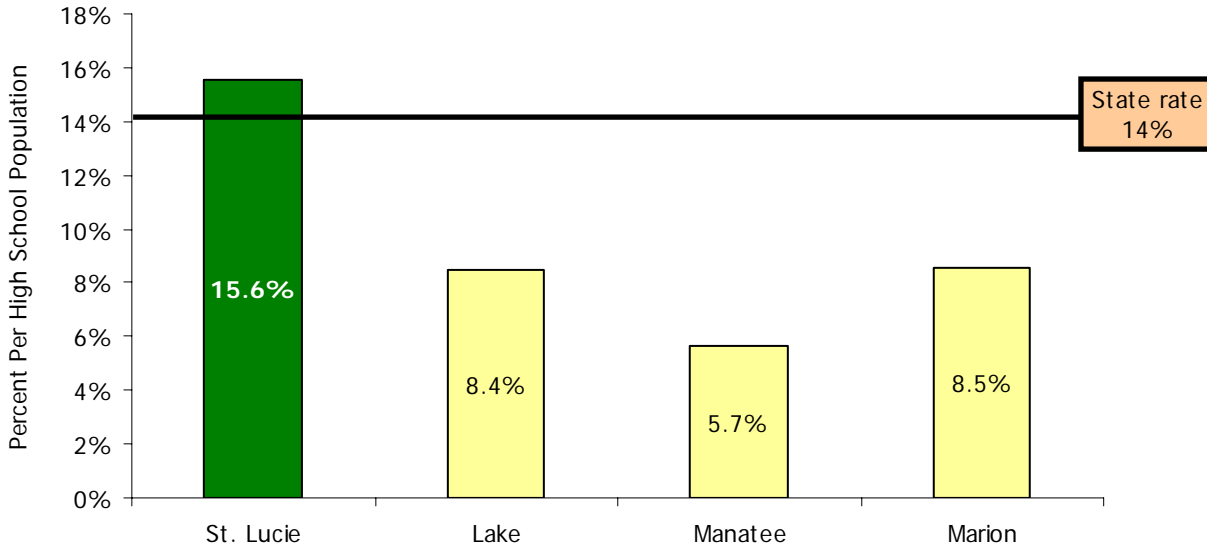
Source: Florida Department of Education. Rate calculated by PEI (number of incidents divided by the population)

**Trend in Crime and Violence in High Schools
St. Lucie County**



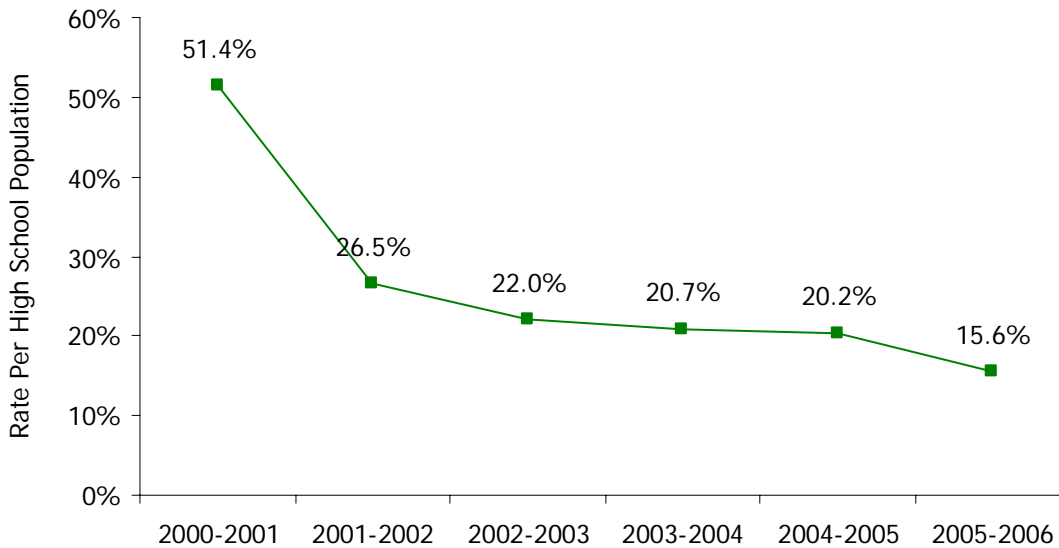
Source: Florida Department of Education. Rate calculated by PEI (number of incidents divided by the population)

Crime and Violence Incidents In Middle School, 2005-06



Source: Florida Department of Education. Rate calculated by PEI (number of incidents divided by the population)

**Trend in Crime and Violence in Middle Schools
St. Lucie County**



Source: Florida Department of Education. Rate calculated by PEI (number of incidents divided by the population)

COMMUNITY RESPONSE TO SAFETY AND SECURITY

Residents like the small town appeal of St. Lucie County.

Focus group respondents point to the friendliness and small town feeling of St. Lucie County as an aspect of the community they most value. Some respondents, particularly the Haitian and Hispanic residents, commented that one of the primary reasons they moved to St. Lucie County was to get away from the large cities and the problems that are associated with urban areas. When asked why they moved to St. Lucie County, one Haitian said:

"Less people. The community is closer than in Miami. I have family down in Miami and all they do is complain all the time about the government and schools. Here there's a lot to complain about, but we can do something to make things better."

To many, St. Lucie County is a safe place to live which is reflected in the responses of the telephone survey respondents. Two-thirds (66%) indicated they feel safe in their neighborhood.

This perception was strongest among residents with incomes over \$25,000 and residents who do not live in 34950 in Fort Pierce, 34982 at Midway Road, and 34952 near Spanish Lakes. The other area where residents feel less safe is 34953 between I-95 and the Florida Turnpike surrounding SW Gatlin Boulevard.

Indicators show most crime rates are down, but gangs remain a concern for many in St. Lucie County.

Among residents in the telephone survey and community leaders in the focus groups, crime is not a dominant concern in St. Lucie County. That is, except for gangs. It appears that the community has a fairly accurate perception of what is happening in the county.

As safety and security indicators clearly show, St. Lucie County has a lower crime rate than it did 20 years ago. Furthermore, St. Lucie County's adult crime rate is below the state level. However, when it comes to juvenile crime, the story is not as positive. Juvenile crime indicators are above state levels and definitely on the upswing compared to a couple of years ago.

To several of the focus group participants, gang activity is seen, in part, as coming from influences from the larger counties to the south, particularly Miami-Dade County. However, others point to the need for more parent involvement in their children's lives, as well as a need for the county to provide activities for teenagers which will help keep them out of trouble.

Ultimately, many, including law enforcement officers who participated in the focus groups, see gangs as part of the larger problem of families living in poverty, being uneducated, and with limited employment opportunities.

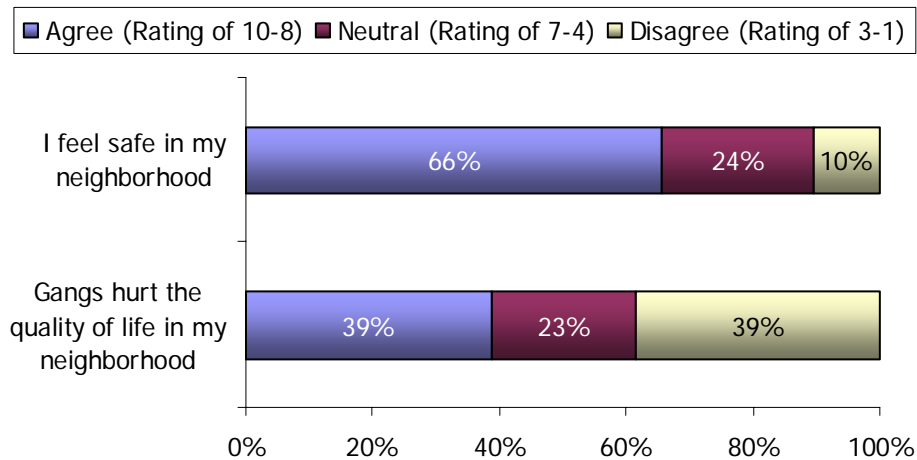
The following is a quote from the Fort Pierce Police Chief taken from the local newspaper related to gang activity in St. Lucie County.

“If we try to just attack the gangs it’s not going to work because you still have people that are living in poverty, people that haven’t been educated, people who don’t have the supervision. All the things that you need to grow up and live a healthy and happy life.”

Gang activity will continue to hurt the quality of life for residents.

The focus groups, particularly the session with community leaders, indicated a growing problem with gangs. Participants in the telephone survey agree. Overall, more than one-third (39%) agree that gangs hurt the quality of life in their neighborhood. While there is little difference in the levels of agreement by demographic subgroup, Black respondents are far more likely to agree with this statement (51%).

Agreement with Statements related to Gangs

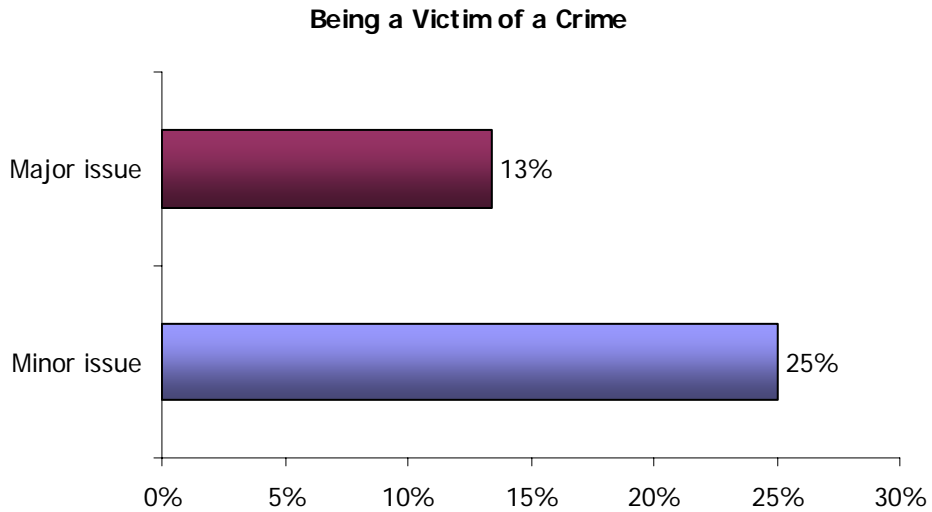


Data Source: Questions 8 and 12 in community telephone survey

Gang activity may correlate with some residents being crime victims.

With the growth of gangs, being a victim of crime was a major issue for 13% of St. Lucie County residents in the telephone survey. Respondents over age 65 and residents with lower incomes are more likely to report this as a major issue.

Not surprisingly, the location of those who are victims of crime correlates highly with the location of gang problems. Specifically, they follow the U.S. 1 corridor in zip codes 34950, 34983, and 34952.



Data Source: Question 14 in community telephone survey

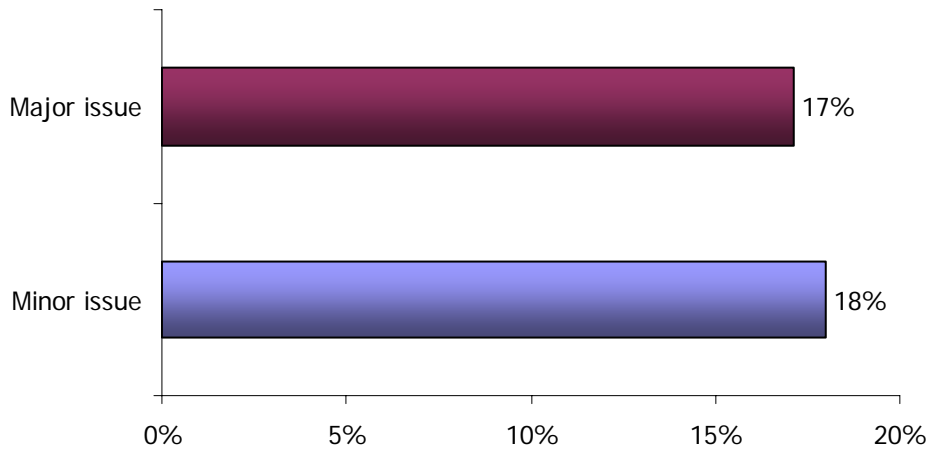
Juvenile Delinquency

Gang activity may be increasing teen criminal activity in St. Lucie County.

It is no surprise that one in six residents (17%) have had major problems with criminal activity by teens in the past 12 months, according to the telephone survey. Teen criminal activity is more of a major issue among Hispanic than non-Hispanic residents. In addition, it is much higher among Blacks than Whites. Further, lower income groups are more likely to report a major issue with teen criminal activity in their household during the past year.

Households with teen criminal activity are most likely to be located in Ft. Pierce in 34950 and 34947 or in 34953 between I-95 and the Florida Turnpike in Port St. Lucie.

Criminal Activity by Teens



Data Source: Question 45 in community telephone survey

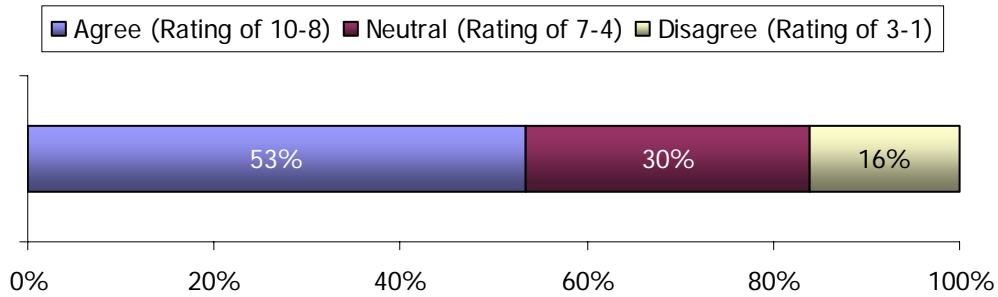
Safety for Children and Families

Feeling safe in school is a concern for many parents.

Overall, 53% of parents agree that their children feel safe in their schools. This finding crosses all demographic, ethnic, and racial lines.

Residents living in zip codes 34953 and 34983 are most likely to agree their children feel safe in school.

Agreement for Children Feeling Safe in School



Data Source: Question 33 in community telephone survey